

Communities and Crisis

- Inclusive Development through Sport

27 October - 31 October, 2012
„HausRheinsberg Hotel am See“, Rheinsberg, Germany

Prof. Dr Gudrun Doll-Tepper, *Freie Universität Berlin*, Berlin, Germany

Dr Doll-Tepper is Professor for Integration Pedagogy, Physical Activity and Sport at Freie Universität Berlin's Department of Pedagogy and Psychology. Combining the fields of sport and recreational sciences she is one of the leading experts on sport for people with a disability worldwide. Another field of interest and engagement has been women and gender equality in sport. Moreover Dr Doll-Tepper is a respected board member in numerous international sport science and athletic organisations. A former president of ICCSPE, she currently holds the vice-presidency of DOSB, Germany's national Olympic committee, where she is responsible for Learning and Olympic Education.



Ken Black, *Loughborough University*, Leicestershire, UK

Mr Black has spent a lifetime of work as a practitioner in the field of inclusive physical activity and disability sport, as teacher, coach and development officer amongst other roles. He has developed and advised on inclusive and disability sport programmes for the Youth Sport Trust, the Australian Sports Commission (ASC), government departments and numerous sports governing bodies, both in the UK and overseas. Mr Black has developed numerous training and practical educational resources (e.g. activity cards, an interactive CD ROM, training manuals, book and journal material). With Australian-based colleague Peter Downs, Mr. Black has recently launched The Inclusion Club, a website for practitioners working in inclusive physical activity: <http://theinclusionclub.com/>. A major recent project has been ICES (International community Coach Education Standards), a coach education project targeting practitioners working in sport for development as part of the wider International Inspirations London 2012 legacy programme.



Communities and Crisis

Inclusive Development through Sport

27 October - 31 October, 2012

„HausRheinsberg Hotel am See“, Rheinsberg, Germany

Dr Ian Pickup, *Roehampton University*, London, UK

A former school teacher, sport development officer, professional rugby player and coach, Ian is currently the Director of Student Affairs at the University of Roehampton in London. His responsibilities include strategic leadership and management of various aspects of the university student experience, including careers guidance, student funding, counselling, student sport, welfare, and disability services. A key focus of his role is enhancing student employability through volunteering, service and leadership projects, within which Ian is able to continue his lifelong passion for the educative role that sport and the arts can play within communities. Formerly a Principal Lecturer in Education and Director of Sport, also at Roehampton, Ian has written key texts and academic papers relating to the teaching of physical education, with a focus on developmental physical education in primary schools, the training and education of school teachers and the use of sport as an educational tool. Ian established the 'Move' project in 2005, in which student coaches and mentors work with children and young people from disadvantaged communities in London, using sport as a vehicle for engagement and aspiration raising. An experienced trainer and educator, Ian was awarded a National Teaching Fellowship by the Higher Education Academy in 2007 and elected as a Fellow of the Royal Society of Arts the same year. Ian qualified as a teacher at the University of Warwick and holds a PhD from the University of Surrey.



Jutta Engelhardt, *Swiss Academy for Development*, Biel, Switzerland

Ms Engelhardt is a political scientist working as Head of Sport and Development at the Swiss Academy for Development (SAD). For the last 10 years she has worked in development work in Eastern Europe and Asia. Ms Engelhardt designed locally adapted harm reduction curricula and trained outreach teams in contacting and counselling members of "hard to reach" target groups. Currently she is Executive Secretary to the Steering Board of the International Platform for Sport and Development (www.sportanddev.org). In her current function, Ms Engelhardt designs Sport & Development interventions, raises funds and conceptualizes new initiatives and projects, and coaches SAD project managers in their project coordination in Sport and Development.



Communities and Crisis

Inclusive Development through Sport

27 October - 31 October, 2012

„HausRheinsberg Hotel am See“, Rheinsberg, Germany

Marianne Meier, *Swiss Academy for Development*, Biel, Switzerland

Marianne Meier is a historian and political scientist who studied in Fribourg/ Switzerland, North Carolina/USA and Siena/Italy. For more than ten years she is working in the field of ‘Sport and Development’ with a special focus on gender, football and monitoring & evaluation. As project manager and researcher at the Swiss Academy for Development (SAD), she cooperated with local NGOs in the field and conducted numerous workshops in Sri Lanka, Morocco, Colombia, Southern and Eastern Africa, and Europe. Her book “Tender Feet on Hard Leather” on female football was awarded a price for Gender Studies at the University of Fribourg/ Switzerland. Currently she is teaching and completing her Ph.D. at the Technical University of Munich (TUM) in Germany. Her thesis is on sporting role models in Sub-Saharan Africa as potential catalysts to promote empowerment and tackle gender issues. On behalf of the TUM, she is as well coordinating an EU project in cooperation with the three partners ICSSPE, the Danish Red Cross, and SAD. This project (SPAPSI) aims at the production of a practical handbook on how to use sport and physical activity in crisis and post-disaster intervention. Marianne Meier is an Executive Board member (2009-13) of IAPESGW (Internat. Association for P.E. and Sport for Girls & Women), Advisory Council member of ‘Women Win’, Board member of ‘Terre des Hommes Switzerland’, and SAD associate.



Lou Berholz, *Edgework Consulting*, United States of America

Lou has been working youth facing organizations for over 20 years. He studied Human Development at Cornell University and has helped create curriculum, program designs, evaluation tools and staff trainings in the USA, Kenya, Thailand, Ireland, Israel, Gaza, South Africa, Namibia, Zimbabwe, Ethiopia and beyond. Lou founded Edgework to help provide a bridge between research and practice. Lou’s extensive content knowledge base in the realms of sports-based youth development, resilience, working with vulnerable populations, HIV education, group dynamics, activity design, curriculum development, leadership and team development are a direct result of his passion for learning and creating powerful programme experiences.



Communities and Crisis

- Inclusive Development through Sport

27 October - 31 October, 2012
„HausRheinsberg Hotel am See“, Rheinsberg, Germany

Steffi de Jong, PlayAble, Tilburg, Netherlands

Ms. De Jong, passionate about using the power of sport for social change, co-founded PlayAble while still at university. After receiving her Master degree in Adapted Physical Activity in Leuven, Belgium, Oslo, Norway and Stellenbosch, South Africa and a Master degree in Implementation and Evaluation of Sport Projects for people with disabilities at the Paris 10 University, France she was committed to continue impacting lives of people with disabilities. In the last 4 years, Ms. De Jong has been working on several S&D projects in Africa and was part of the development of PlayAble from charity based organisation to a social enterprise. This made her interested in the potential of using social entrepreneurship to tackling global issues and a second passion was born. In her free time, Ms. De Jong loves to be active, from playing soccer and squash to mountain biking and skiing. At the moment she is not working or sporting, you will find her enjoying life with family and friends.



Dr Alan Kirk, Kennesaw State University, GA, USA

Dr Kirk has served as Chair of the Human Services Department since 2001. His professional practice background includes service with the U.S. Air Force, the Veteran's Administration, and full time private practice in the Miami/Ft Lauderdale metropolitan area. Dr Kirk has written several training programs that have been implemented by federal and state governmental organisations. The focus of these training curricula includes leadership, organisational development, case management services, and crisis screening/critical incident debriefing. He currently teaches leadership and research courses at Kennesaw State University. Adding to his scientific merits, he has been attending the seminar regularly with his colleagues and students.



Communities and Crisis

- Inclusive Development through Sport

27 October - 31 October, 2012
„HausRheinsberg Hotel am See“, Rheinsberg, Germany

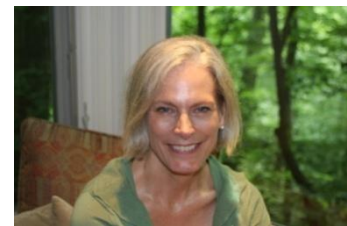
Dr Ardith Peters, *Kennesaw State University, GA, USA*

Dr Peters is Associate Professor in the Department of Social Work and Human Services at Kennesaw State University. She spent 10 years as Director of Planning and Evaluation and as Grants Manager in the Atlanta Public Safety/Police Departments. These experiences, as well as a childhood spent abroad, have had a formative effect on her research and teaching. Her research interests include poverty, violence, and issues of women and children. Her international interest is focused on Africa, and she serves on the Advisory Board of the Center for African & African Diaspora Studies. Dr Peters's courses include human behaviour in the social environment, human socialization, poverty and culture, and non-profit administration.



Dr. Irene McClatchey, *Kennesaw State University, Georgia, USA*

Dr. McClatchey, serves as an assistant professor at Kennesaw State University School of Social Work and Human Services since 2009. She previously served as an assistant professor, adjunct professor and teaching assistant at the University of Georgia, Athens, USA, for eight years. Her teaching focuses on grant writing, programme development, death & dying, and clinical skills. Her research agenda focuses on childhood traumatic resiliency in bereaved children and the loss of a spouse or child. She was instrumental in the formation of the Society for Clinical Oncology Social Work, now named SWOG. She is the founder and director of a healing camp for bereaved children, which held its first camp session in 1995. It has since held numerous statewide and national conferences on the effects of the death of a parent and/or sibling on adolescents as well as adolescent suicide. She has been interviewed on a number of television programs as an expert in the area of children and grief.



Communities and Crisis

- Inclusive Development through Sport

27 October - 31 October, 2012
„HausRheinsberg Hotel am See“, Rheinsberg, Germany

Dr. Dean Ravizza, *Salisbury University, Salisbury, MD, USA*

Dean Ravizza is an Associate Professor and Physical Education Program Director in the Dept. of Health and Sport Sciences and Senior Research Practitioner in the Center for Conflict Resolution at Salisbury University. His work focuses on the intersection of research, fieldwork, and practice to advance the uses of sport for children and youth in armed conflict, former child soldiers, and other vulnerable children.



He served as the principal investigator for a long-term research project based in Northern Uganda with a primary focus on the role of sport in the reintegration and social inclusion of children formerly associated with armed groups. Ravizza is the creator of the Peaceful Play program for children and youth in armed conflict. He has collaborated with a number of community-based, non-governmental, and United Nations organizations on projects related to sport for development and peace for children and youth in crisis. He earned his Ph.D. from Virginia Tech University with an emphasis on psychosocial aspects of sport and physical activity. Ravizza currently serves as an active member of the Washington Network on Children and Armed Conflict, the Education Working Group of the International Sport for Development and Peace Association, the Brunel International Research Network for Athlete Welfare, and other strategic groups involving vulnerable children and youth.

Olivier Nyssens, *Sisu - Psychosocial Emergency Assistance Unit, Belgian Red Cross, Brussels, Belgium*

Olivier Nyssens is a Social Anthropologist by education. Over the year he has been active in various environment and positions that can be summarized as “Social Engineering”. Currently Olivier is a Project Coordinator within the Belgian Red Cross team for psychosocial support. He has been active in the field of applied Victimology for over ten years: starting as a volunteer with Red-Cross and taking a permanent role since 2005. He has designed, developed, participated in and monitored activities and projects in support of people and groups affected by catastrophes in Belgium and abroad. Olivier is part of the Roster of experts linked to IFRC, Reference Center for Psychosocial Support, based in Copenhagen.



Communities and Crisis

- Inclusive Development through Sport

27 October - 31 October, 2012
„HausRheinsberg Hotel am See“, Rheinsberg, Germany

Karin Bultiauw, *European Institute of Higher Education Brussels, Belgium*

Karin Bultiauw has completed a Master in Physical Education at the KUL (Catholic University Leuven) in Belgium and also has a Teachers Qualification in Sport and Leisure activities from the Parnas Institution of Physical Education Brussels. She is currently a Lecturer at the University College Brussels in the Department of Teacher Education Physical Education – Parnas Dilbeek campus. Expert in Didactics and Methods of Physical Education, Adapted Physical Education and Track and Field, Karin is a former Lecturer in the Social Care Work department in the Parnas campus in Dilbeek. Specialized in Personal Development through Creative activities, she organizes an annual inclusive sports camp with people with disabilities and students from Parnas Campus. Karin is a former trainer for Track and Field athletes with Cerebral Palsy and coached Track and Field Paralympic athletes in New York, 1984. She is also a board member of Directors of the Center of Adapted Sports (CAS) in Leuven Belgium.



Lydia la Rivière Zijdel, *Lydia Zijdel Foundation, Amsterdam, Netherlands*

Lydia is currently the highest ranked martial arts woman in a wheelchair in the world (3rd Degree Black Belt in Karate and 2nd Degree Black Belt in Aikido). She is a licensed selfdefence and martial arts instructor and founder of the Sport and Physical Activity Trainer programs for wo/men with disabilities in developing countries. She studied psychotherapy at the University of Amsterdam, Social Sciences MA (Disability Studies and Social and Community Studies), at resp. the Universities of Leeds and Leicester (UK). She has long-term experience in various African and Asian countries working at the grass-roots level with persons with disabilities in educational programs in relation to sport, physical activity and selfdefence and empowerment programs. Lydia is closely connected to various international (women and) sport networks (e.g. IWG, WSI, Women Win, SportAccord, IPC, IAF). All the work of herself and a large team of expert colleagues is carried out via the Lydia Zijdel Foundation. Further, she teaches gender and disability within the MA program Disability and Development at the Free University of Amsterdam.



Communities and Crisis

Inclusive Development through Sport

27 October - 31 October, 2012
„HausRheinsberg Hotel am See“, Rheinsberg, Germany

Emiliano Mazzoli, *University of Rome, Italy*

Emiliano Mazzoli is a sport educator and manager, graduated with a degree in Sport Management (MSc), from the University of Rome "Foro Italico" (Italy). Now Lecturer in Individual Sports (combat sports) and Karate team manager for the University Sport Centre he is a strong supporter of the positive power of sport in terms of social support, development and peace. He conducted several sport interventions for disadvantaged groups of children, adolescents and older adults. Together with a group of colleagues and friends, the SmilersOnlus, he recently visited the Italian region of Emilia Romagna, hit by an earthquake in May 2012. They implemented a one-week event of adapted "olympic" activities for children and adolescents. During his presentation in Rheinsberg, Emiliano will present this experience. During the last two years Mr. Mazzoli worked at the International Council of Sport Science and Physical Education (ICSSPE) Office, assisting the organisation and implementation of ICSSPE's activities and events.

